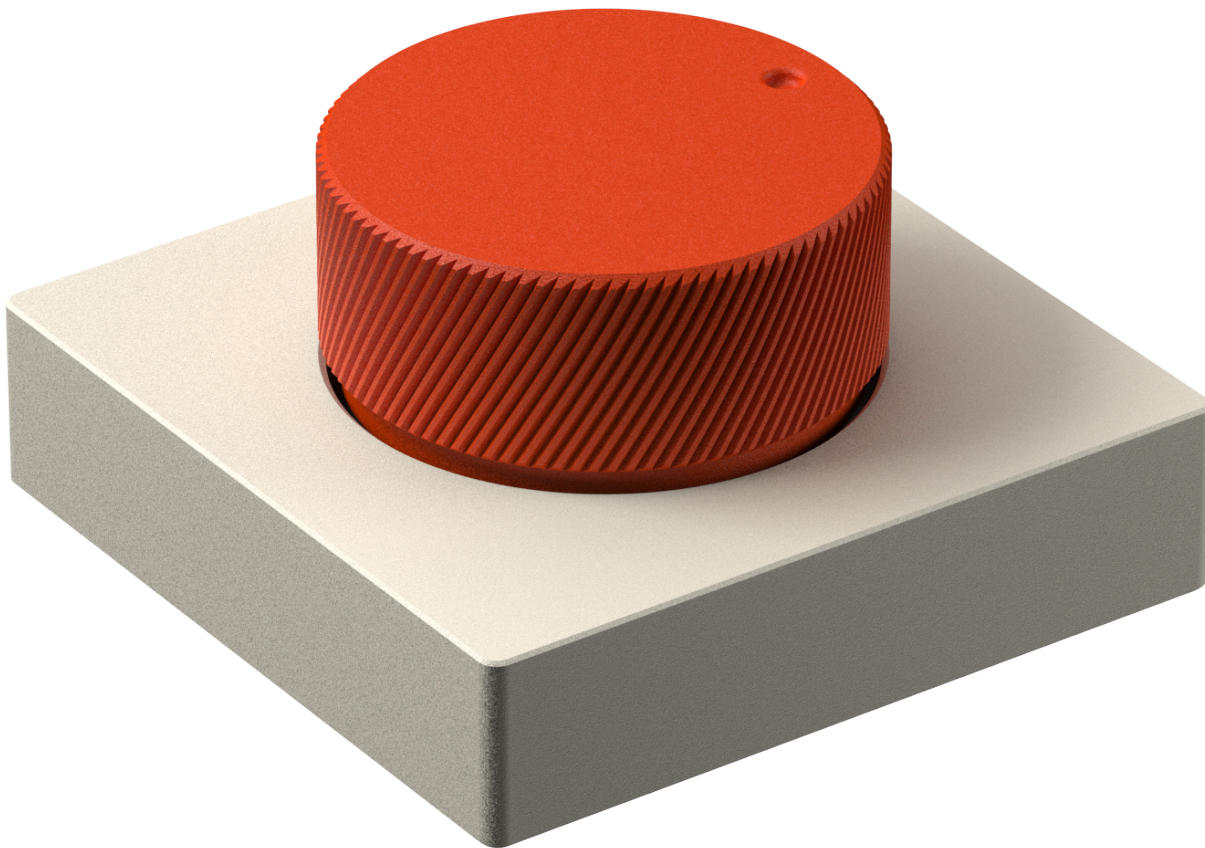




Desktop custom volume knob

User Manual



Please read the manual carefully before using this product.



Product Introduction

Desktop custom volume knob: supports wired, Bluetooth/2.4G wireless connection modes. Default adjustment of volume plus or minus, mute, screen brightness plus or minus. Customize button settings (basic buttons, combination keys, multimedia, RGB lighting settings, mouse) through software according to your own usage habits.

Specifications

Connection method: USB, Bluetooth (wireless model), 2.4G (wireless model)

Input voltage: 5V

Working current: about 4-6mA

Sleep current: about 2uA (wireless model)

Sleep wake-up time: within 1 second (wireless model)

Battery capacity: 180-350mA (wireless model)

Ambient light: RGB (colorful light)

Supported systems: windows, android, mac os, ios,

Knob Function

Knob operation: rotate left, rotate right, press the knob, press and hold to rotate left, press and hold to rotate right, set five different functions.

Default settings: rotate left for "Volume -", rotate right for "Volume +", press for "Mute", press and hold left for "Screen Brightness -", press and hold right for "Screen Brightness +".

Bluetooth/2.4G connection method

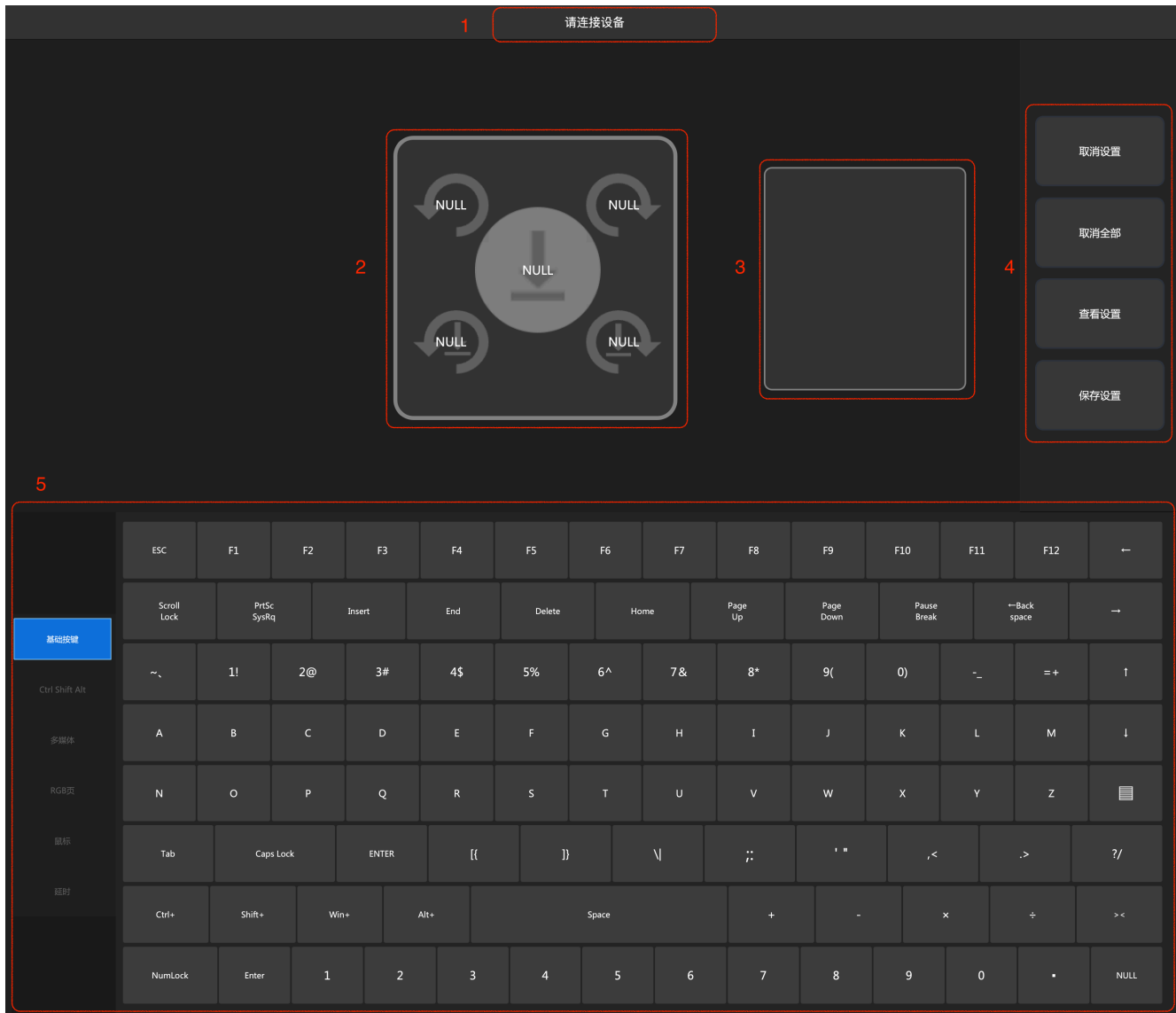
Bluetooth connection method: Press any button to wake up. Search the keyboard name "ANTICATER_MINI" on the computer, connect this name, and the connection is successful. If the keyboard name is not searched, you can try to wake up by pressing any button.

2.4G connection method: Insert the 2.4G keyboard receiver into the computer. Press any key on the keyboard to wake up, and wait for about 3 seconds to successfully connect.



Custom software instructions

Download: <https://drive.google.com/drive>



- 1 Connection status display area
- 2 Button selection area
- 3 Select the button data display area
- 4 Operation Area
- 5 Character selection area

Function Introduction

Cancel settings: Clear the preset function of the currently selected button.

Cancel all: Clear the functions of all current buttons.

View settings: Read the current function settings.

Save settings: Save all settings that have been modified.

Lighting Introduction

Lighting mode: 0 - 5, 6 lighting modes.

Mode 0: Turn off the light.

Mode 1: White light. **Mode 2:** Green Light.

Mode 3: Alternate lights. **Mode 4:** Jump mode. **Mode 5:** Flashing mode.

Lighting settings

First switch to the RGB LED page to set the light.

Click the "LED Mode 1" button with your mouse, then click Save Settings to save successfully.

Note: The Bluetooth/2.4G mode is to ensure wireless battery life. Therefore, the backlight will only light up when the connection is recognized. Wireless mode does not support constant light.

Customize key function operation steps

1. First open the upper computer software that defines the function.
2. Connect the custom knob to the computer with a USB cable, and the connection status will display "Device connected".
3. Click the mouse to select the key in the keyboard key selection area (this key corresponds to the key on the physical keyboard). For example, clicking the first key means selecting key 1 of the keyboard.
4. Click to set the character and select the character you want to set in the selection area. For example, click the letter "A".
5. Click "Save Settings", and the software prompts that the data has been saved. At this time, "Key 1" is the function of the character "A".

Note: To define a key combination, first click "Key", then click "ctrl", then click "c", and finally click to save the settings. At this time, the function of "Key" is to copy.

Precautions

1. When defining the key function, the keyboard and computer must be connected together with a data cable.
2. For the first connection, the default green light display is 5 seconds after the configuration restarts the connection.
3. When the keyboard is set to continuously output a string, a maximum of 18 characters can be set.
4. When the keyboard is set to delay output, the maximum delay time is 1 minute.
5. Do not use a power supply of more than 5V to connect.
6. For wireless customization, if there is no device connected, it will enter sleep mode after 3 minutes of no operation and wake up by pressing any key.
7. Do not disassemble the machine without authorization and tear off the fragile label. If there is a fault, please contact the dealer or after-sales technical department in time.
8. After receiving the product, operate according to the instructions. If you have any questions, please contact us in time for technical support.

Frequently asked questions

Custom software cannot connect to the device

Solution: Check if the USB data cable is connected. If the data cable is connected, but the software does not show a successful connection, please try changing the data.

The operation knob does not respond

Solution: For wired models, please check whether the data cable is properly plugged in, or change the computer interface and try again. For Bluetooth models, please check whether the keyboard is in working condition and whether the computer is connected. For 2.4G version, check whether the receiver is properly plugged in.

Cannot connect to Bluetooth or 2.4G

Solution: Please check whether it is powered on and whether the battery is charged. Charge for half an hour before connecting. Check whether it has been connected by other devices, otherwise the current device cannot be detected.



After-sales issues

Dear User:

Thank you for purchasing the Reverse Desktop Custom Volume Knob. In order to ensure that your product enjoys our better after-sales service, please read this manual after receiving the product.

1. After-sales email: chuka19871019@gmail.com

⚠: Damage caused by improper use, accidental damage or self-disassembly is not covered by the warranty.



YouTube

@ANTICATER



@ANTICATER_LAB



reddit

ANTICATER



ANTICATER